



Adding elegance and safety to vertical mobility

www.airlift.systems

+1.844.960.4141

© 2025, Blissera Corp.
San Jose, CA, USA



homebuilding goes vertical



market trend – ‘growing small’

- lot prices growing 2x the rate of inflation
- multi-story is cheaper due to smaller foundation & smaller roof
- multi-story is mainstream 2x the number of ranch-styles

the problem

- fighting the stairs daily is a challenge for many
- age in place is a problem in multi-floor spaces

vision

- an elegant, compact, and safe **personal elevator** will become a **must-have** household attribute for the comfort of vertical living

pitfalls of vertical mobility

- **bulky** metal clutter
- **slow** and **noisy**
- fall and **injury** hazard, **unsafe**
- **high** product and maintenance **cost**



reimagine your vertical ride

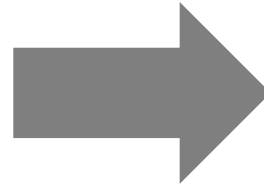


no strings attached

eliminated the visible clutter
from conventional designs:

- ✗ rails
- ✗ guides
- ✗ cables
- ✗ ropes
- ✗ pulleys
- ✗ chains
- ✗ bolts
- ✗ gearboxes
- ✗ lubrication
- ✗ metal skeleton
- ✗ counterweight
- ✗ concrete shaft
- ✗ dangling cables

replaced with:



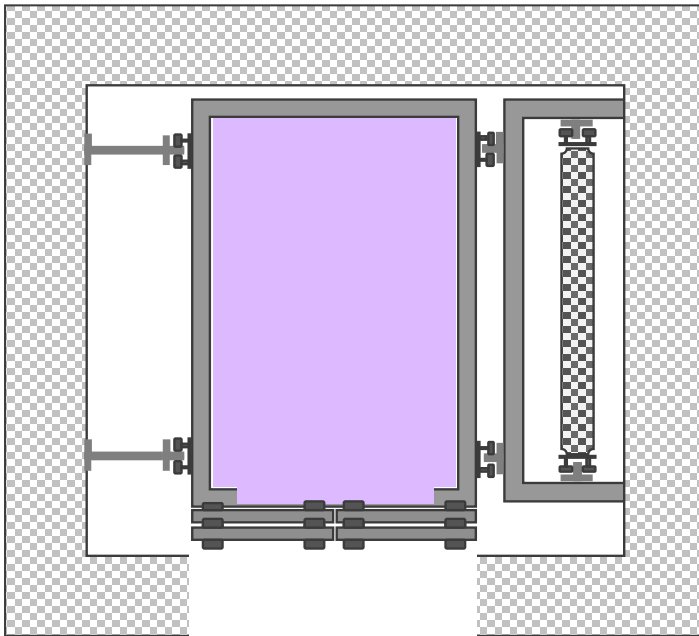
tempered glass,
wireless cabin &
vacuum technology

AirLift



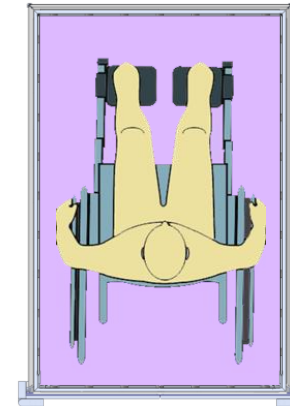
absurdly compact and ADA-compliant

traditional solution:
extends **3-5x** beyond the cabin



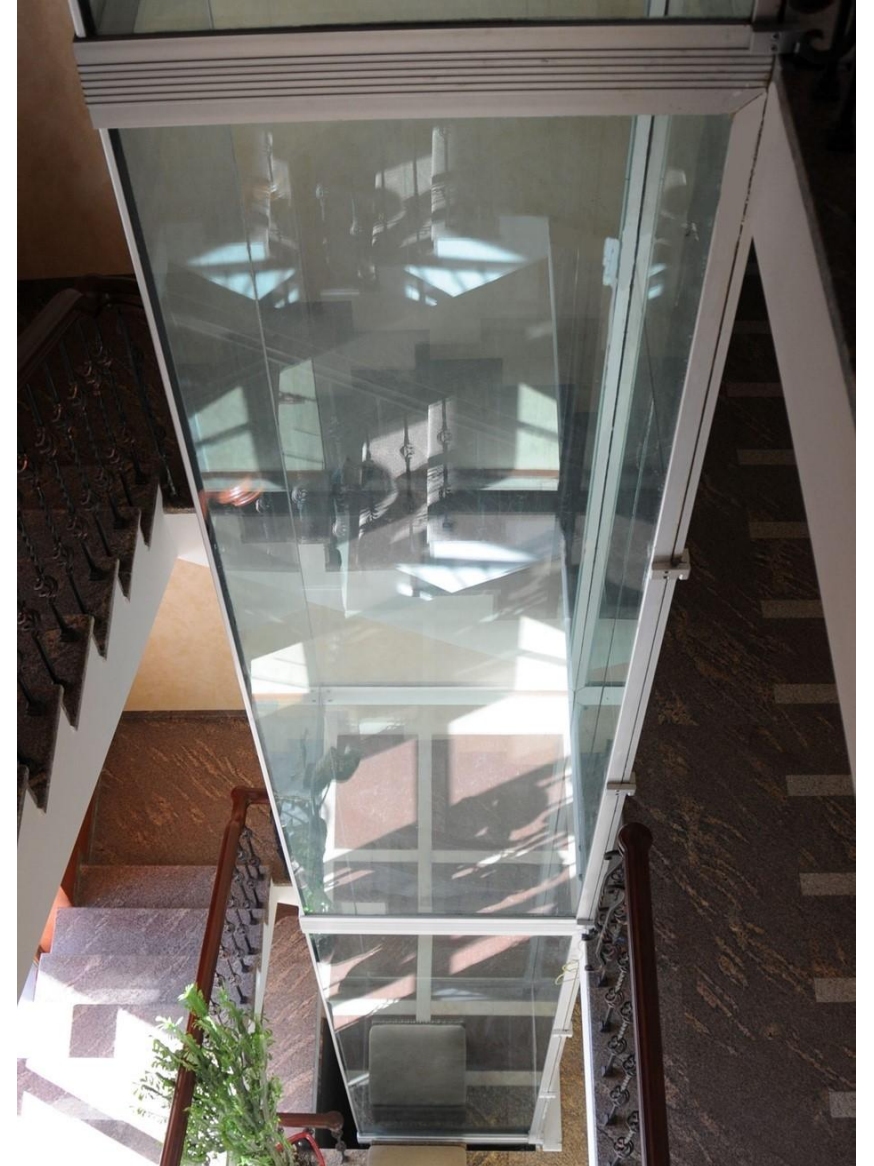
VS

AirLift:
with the **same** cabin **space**



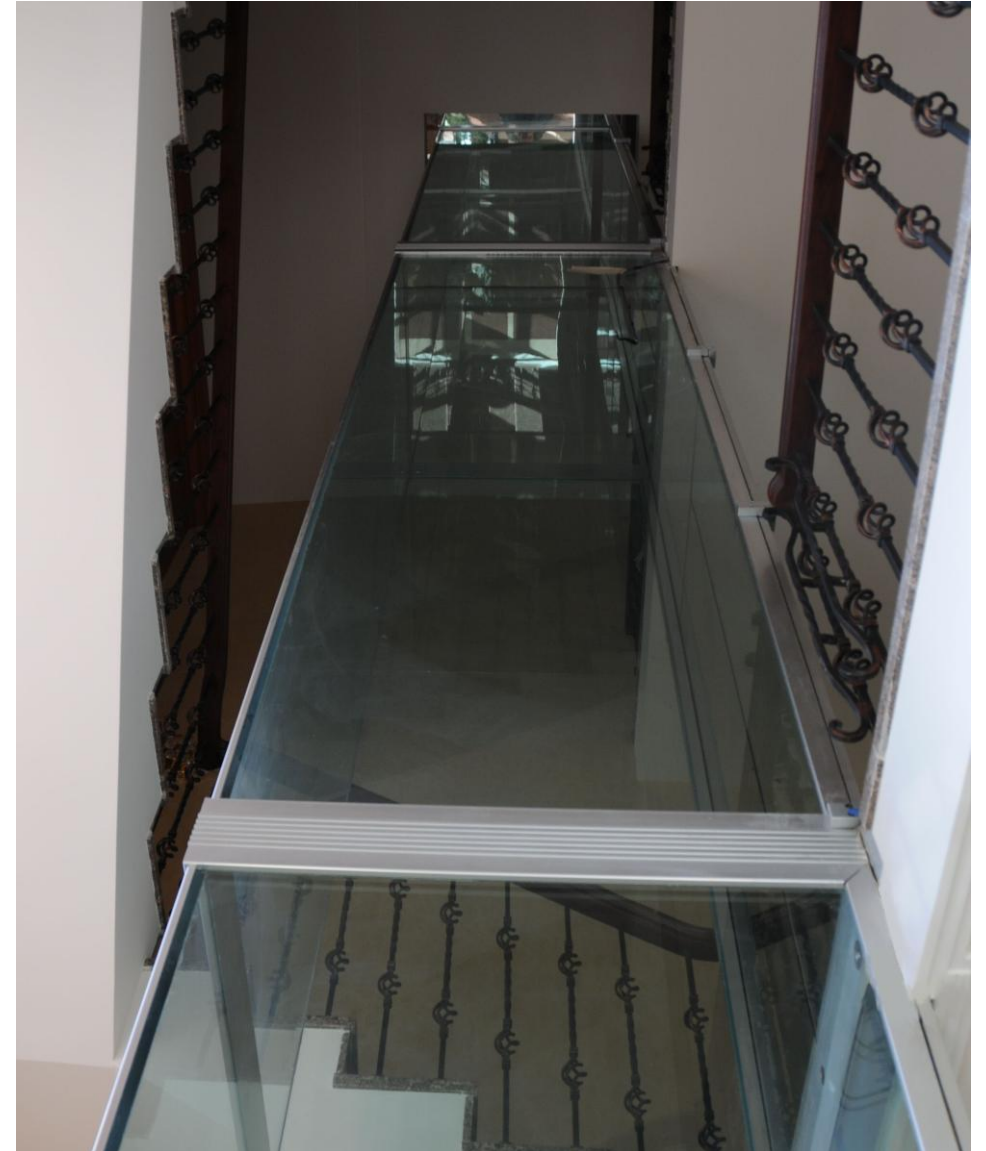
elegant, fast, smooth and energy efficient

- **elegant** and **boltless** glass and aluminum
- **5x faster** at 20" – 40"/sec
- **5x** vertically stacked-up **flutes** stay **intact**
- **10x quieter** at 55dB (whisper of the air)
- **less power** consumption than your kitchen fridge
- fully automated smart **IoT** device



fallproof , scratchproof and unbreakable

- emergency **brakes** will **halt** the cabin mid-air
- tempered **glass 7x stronger** than float glass
- unscratchable **aviation** grade **aluminum**
- withstands **sledgehammer** blow
- **earthquake-safe** construction

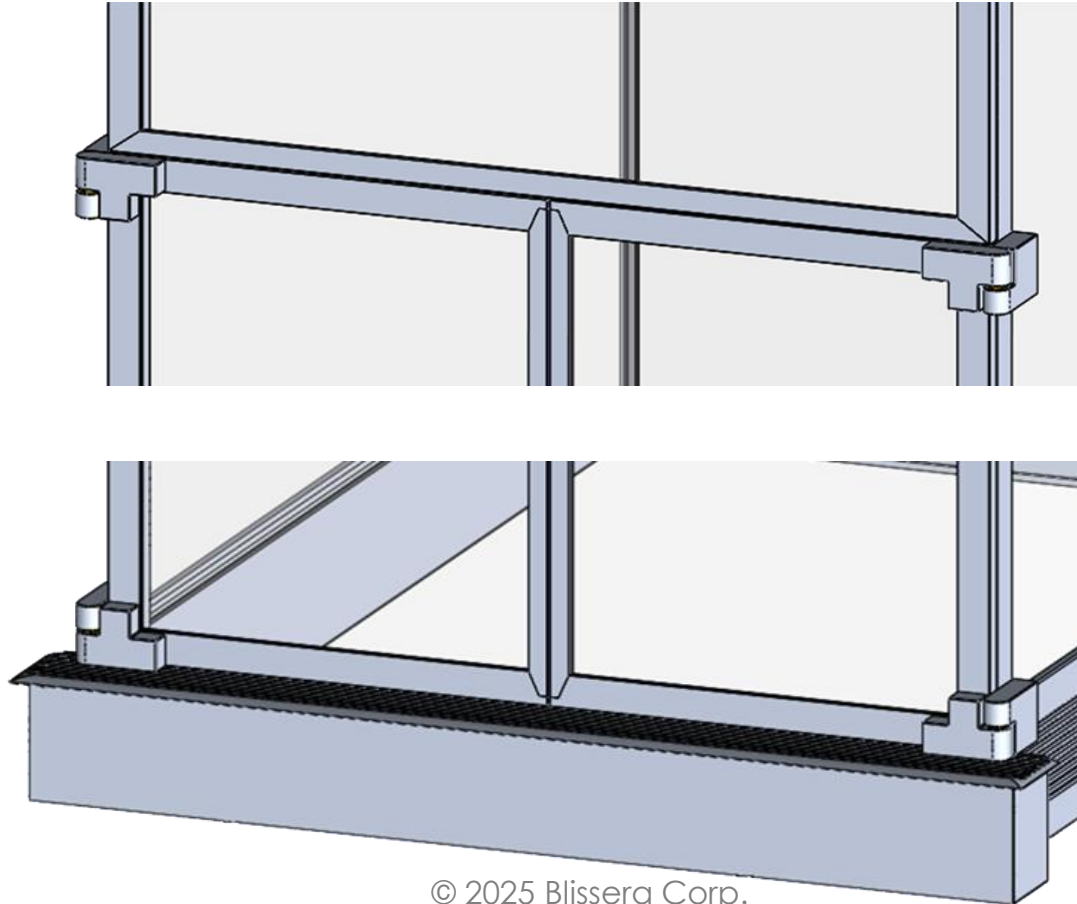


injury-proof and child-safe

tamperproof **door-lock** mechanism

AirLift:

- no gaps
- no holes
- no trenches
- no handles
- no tampering



doors are **locked**,
at all times, except
at the parked floor

fire-resistant and power outage friendly

- glass hoistway melts at 3,000°F, **resisting** mostly any **fire**
- aluminum shielding keeps **electronics safe**
- thermo-insulated cabin keeps the **cabin cooler**
- airtight hoistway keeps the **smoke away**
- **outage friendly** – never again being stuck in an elevator



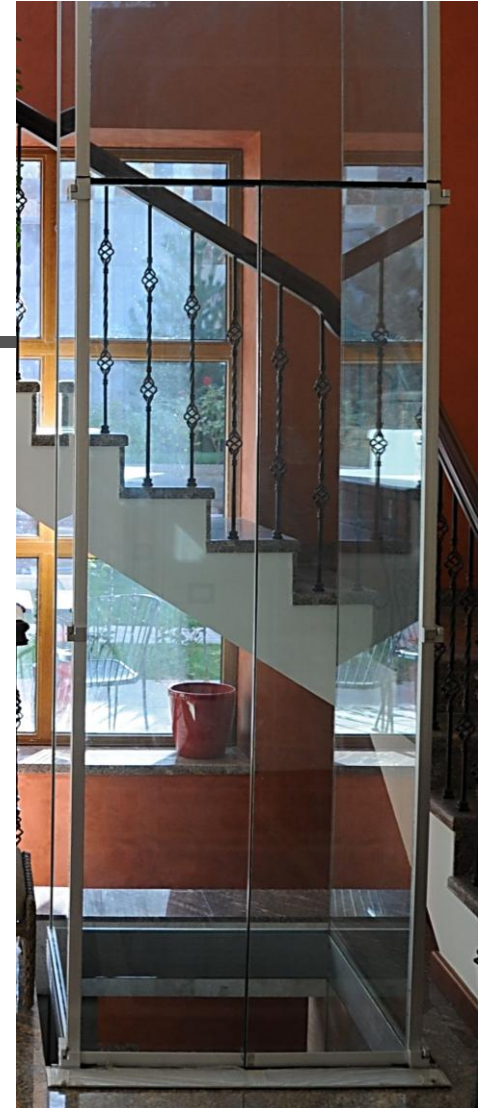
lower cost of ownership



	Competition	AirLift™
Hoistway*	\$80K – \$200K+	<u>Included</u>
Product	\$30K – \$80K	\$40K - \$80K
Installation	\$15K – \$35K	\$8 – \$16K
Maintenance	\$3.5K – \$5K /y	\$1K – \$2K /y

* Includes shaft construction cost,
excludes other remodeling expenses

AirLift™ – 3x lower cost of ownership



market players



competitive advantages

Feature	ΔIRLIFT	Pneumatic	Cable Driven, Chain Driven, Gearless, Hydraulic – the rest
technology	vacuum based, wireless, IoT, automatic ✓	pneumatic, rails, cables, manual operation ✗	old tech. – rails, ropes, counterweights ✗
design	tempered glass exoskeleton, scratch-resistant ✓	metal skeleton, acrylic glass, scratchable ✗	clunky-chunky metal mesh design ✗
safety	fallproof, fireproof, shatterproof, trap-proof ✓	fall hazard, fire hazard, breakable ✗	fall hazard, fire hazard, trap hazard ✗
health impact	ADA-compliant, no fumes, eco-friendly ✓	wheelchair capable model very bulky ✗	hazardous fumes from lubricants ✗
footprint	3-5x smaller footprint for same cabin space ✓	bulky, single door requires high clearance ✗	bulky, large footprint, costly to install ✗
noise level	55dB (10x quieter) – whisper of the air ✓	Harley Davidson in your bedroom – 85dB ✗	average – 65-75dB ✗
speed	5-10x faster – 20" - 40"/sec, smooth ride ✓	4" - 6"/sec with jerky motion ✗	4" - 8"/sec ✗
power usage	30 lifts daily = less power than a home fridge ✓	low to average ✓	high – inefficient machinery & friction ✗
layout options	opposite side entry for flexible layouts ✓	one-side entry only ✗	opposite entry only on large models ✓
pricing	3x lower cost of product ownership ✓	high product & maintenance cost ✗	high product & maintenance cost ✗



product roadmap

Montblanc

budget series

- 2 stops
- 2 adults or 450lb
- 12"/s (30 cm/s)
- one side entry
- est. **Q4'2027**



Kilimanjaro

luxury series

- up to 4 stops
- 4 adults or 1,000lb
- 20"/s (50 cm/s)
- dual entry, ADA
- est. **Q4'2025**



Everest

commercial series

- up to 8 stops
- 8 adults or 2,000lb
- 40"/s (1 m/s)
- dual entry, ADA
- est. **Q4'2028**



Olympus

ultimate series

- up to 30 stops
- 14 people or 3,000lb
- 120"/s (3 m/s)
- rotating cabin, ADA
- est. **Q4'2030**



your fantastic vertical ride



AirLift highlights

- large market
- disruptive technology
- strong IP
- high gross margins
- large preorders
- experienced team



www.blissera.com



info@blissera.com



(844) 960.4141